

**Georgia State Defense Force  
Regulation 670-1**

**WEAR AND APPEARANCE OF  
UNIFORMS AND INSIGNIA**

Headquarters, GSDF  
Office of the Assistant Chief of Staff, Personnel and Administration, G1  
935 Confederate Avenue  
Atlanta, Georgia  
30316

**15 November 2009**

# Summary of Changes

---

---

The changes noted herein are only those changes of significance or which effect ongoing operations. Changes in terminology, organization or other routine matters are not reflected.

GSDF Regulation 670-1, Wear and Appearance of Uniform and Insignia, dated 01 March 2007

## *IMPORTANT*

*In general, GSDF uniforms will follow the guidelines for Army uniforms as described in Army Regulation 670-1. This regulation is not intended to duplicate AR 670-1 but to focus on grooming standards and the primary duty uniforms of the GSDF: the service, service dress, and battledress uniforms, and their components. If a subject is not covered here, or for more specific details about other uniforms, AR 670-1 will be deemed to apply.*

<b>Paragraph</b>	<b>Change</b>
6-2b	CSM personnel will wear "GA" disc on both lapels of service and dress uniforms.
6-3a	Persons who are assigned as doctors, dentists, nurses, or other professional medical personnel may wear the appropriate Army branch insignia in lieu of the SG insignia.
6-3b	Chaplains and staff judge advocates, upon certification of branch qualification by their respective departments, may wear the appropriate Army branch insignia in lieu of the SG insignia.
6-5a	Officer Candidates will wear OCS insignia in lieu of rank and branch insignia at all times.
6-9a	Wear of U.S. Army Distinctive Unit Insignia or Regimental Unit Insignia is prohibited unless the individual is in retired status from the U. S. Army, Army Reserve or Army National Guard.
6-9d(5)	Wear of DUI authorized on Dress Uniforms.

# GSDF Regulation 670-1

Headquarters  
Georgia State Defense Force  
935 Confederate Avenue  
Atlanta, Georgia, 30316  
15 November 2009

---

## Wear and Appearance of Uniforms and Insignia

---

By Order of the Governor:

Claude J. West  
*Colonel, Georgia State Defense Force*  
*Chief of Staff*

Official:

Lee Martin  
*Colonel, Georgia State Defense Force*  
*Assistant Chief of Staff, G1*

---

**Summary.** This Regulation sets forth policy and procedures for members of the Georgia State Defense Force, both active and reserve. It covers all uniforms, insignia, and accouterments, what is authorized, and how it is worn.

**Supersedes.** This regulation supersedes GSDF 670-1, 01 July 2004,

**Applicability.** This regulation applies to all personnel of the Georgia State Defense Force.

**Supplementation.** Supplementation of this regulation and establishment of command and local policies is strictly prohibited.

**Suggested Improvements.** Suggested improvements which may be considered for this regulation should be forwarded in writing to the proponent agency of this regulation, the Office of the Assistant Chief of Staff, Personnel and Administration, GSDF G1, 935 Confederate Avenue, Atlanta, Georgia, 30316.

---

Paragraph	Contents
-----------	----------

Chapter 1	
General Information	

*IMPORTANT*

*In general, GSDF uniforms will follow the guidelines for Army uniforms as described in Army Regulation 670-1. This regulation is not intended to duplicate AR 670-1 but to focus on grooming standards and the primary duty uniforms of the GSDF: the service, service dress, and battledress uniforms, and their components. If a subject is not covered here, or for more specific details about other uniforms, AR 670-1 will be deemed to apply.*

- |      |                               |
|------|-------------------------------|
| 1-1. | Purpose                       |
| 1-2. | Wear of the uniform           |
| 1-3. | Uniform appearance and fit    |
| 1-4. | Personal appearance           |
| 1-5. | Responsibility for appearance |
| 1-6. | Appearance standards          |
| 1-7. | Wearing of jewelry            |
| 1-8. | Wearing of eyeglasses         |

Chapter 2	
Basic Uniforms	

- 2-1. Uniforms
- 2-2. Identification tags

**Paragraph                      Contents**

Chapter 3  
Army Green Uniform

- 3-1. General guidelines
- 3-2. Composition
- 3-3. Cuff and trouser braid - officers
- 3-4. Headgear
- 3-5. Items worn on the Army green uniform
- 3-6. Accessories

Chapter 4  
Army Combat Uniform

- 4-1. General guidelines
- 4-2. Composition
- 4-3. Headgear
- 4-4. Items worn on the class C uniform
- 4-5. Accessories

Chapter 5  
Cold Weather Uniforms

- 5-1. General guidelines
- 5-2. Composition
- 5-3. Headgear
- 5-4. Items worn on the cold weather uniforms
- 5-5. Accessories

**Paragraph                      Contents**

Chapter 6  
Insignia and Accouterments

- 6-1. General
- 6-2. State insignia
- 6-3. Insignia of branch
- 6-4. Insignia of grade
- 6-5. Officer candidate insignia
- 6-6. Shoulder sleeve insignia of the GSDf
- 6-7. Shoulder sleeve insignia of former wartime service
- 6-8. Leadership identification loop
- 6-9. Distinctive unit insignia
- 6-10. Distinguishing "GEORGIA" and name tapes
- 6-11. Service stripes
- 6-12. Overseas service bars
- 6-13. Brassards

Chapter 7  
Accessories

- 7-1. All weather coat
- 7-2. Belt, black web
- 7-3. Beret

- 7-4. Boots, combat
- 7-5. Cap, cold weather camouflage
- 7-6. Gloves
- 7-7. Handbags
- 7-8. Helmet liner and helmet camouflage cover
- 7-9. Nameplate
- 7-10. Neckwear
- 7-11. Scarves
- 7-12. Neck gaiter
- 7-13. Shoes, oxford, black, male
- 7-14. Shoes, female
- 7-15. Socks
- 7-16. Sweaters
- 7-17. Umbrella
- 7-18. Undershirts
- 7-19. Windbreaker

## Chapter 8

### Wearing of Decorations, Service Medals, Badges, and Unit Awards

#### Section I

##### General Information

- 8-1. General
- 8-2. Authorization

<b>Paragraph</b>	<b>Contents</b>
------------------	-----------------

Section II  
Precedence of Awards, Decorations, and Medals

- |      |   |        |
|------|---|--------|
| 8-3. | Order of precedence by category of medals |        |
| 8-4. | Order of precedence within categories of  | medals |

Section III  
Manner of Wearing Decorations and Medals

- |      |   |                    |
|------|---|--------------------|
| 8-5. | Manner of wear of full-size decorations and | service medals     |
| 8-6. | Manner of wear of service ribbons           |                    |
| 8-7. | Manner of wear of miniature decorations     | and service medals |
| 8-8. | Manner of wear of unit award emblems        |                    |

Section IV  
Authorized Badges and Tabs

- |       |                            |
|-------|----------------------------|
| 8-9.  | Badges authorized for wear |
| 8-10. | Tabs authorized for wear   |

Section V  
Wear of Badges

- |       |   |
|-------|---|
| 8-11. | Manner of wear of marksmanship badges   |
| 8-12. | Manner of wear of shoulder cords        |
| 8-13. | Manner of wear of identification badges |
| 8-14. | Manner of wear of foreign badges        |

Chapter 9  
Wear of the Uniform by Retired and Former Members of the Service

- |      |                           |
|------|---------------------------|
| 9-1. | General                   |
| 9-2. | Wear by retired personnel |
| 9-3. | Wear by former members    |

Appendices

- |   |                           |
|---|---------------------------|
| A | Table of Prescribed Dress |
|---|---------------------------|
-

## Chapter 1

### General Information

#### IMPORTANT

*In general, GSDF uniforms will follow the guidelines for Army uniforms as described in Army Regulation 670-1. This regulation is not intended to duplicate AR 670-1 but to focus on grooming standards and the primary duty uniforms of the GSDF: the service green, dress green and battledress uniforms, and their components. If a subject is not covered here, or for more specific information about other uniforms, AR 670-1 will be deemed to apply.*

#### 1-1. Purpose.

a. This regulation prescribes the uniforms which may be worn, the items which may be worn on the uniforms, the manner in which the uniforms are worn and the occasions when the uniforms will, or will not be worn, for all personnel of the Georgia State Defense Force (GSDF). This regulation also prescribes the authorized material, design, accessories, and the wear of ornamentation, insignia, and other heraldic items.

b. Only uniforms, accessories, and insignia prescribed in this regulation, as approved by HQ, GSDF will be worn by personnel of the GSDF. Illustrations in this regulation are furnished for information purposes only.

d. Except when otherwise directed by a unit commander, the wear of optional uniform items will be at the discretion of the individual.

#### 1-2. Wear of the uniform.

a. The uniform will be worn by all personnel when on duty and may be worn when traveling to and from duty. Duty is defined as performing assignments or duties while under orders.

b. All service uniform combinations are authorized for year-round wear. However, appropriate discretion should be used based on weather conditions and duties. The wearing of combination of uniform items not prescribed in this regulation or AR 670-1 is prohibited. Seasonal wear dates will not be established.

c. The wearing of a combination of civilian and military clothing on duty or on a military installation is prohibited. Wear of military clothing with insignia with civilian clothing at any time is also prohibited. Commercial rucksacks, gymbags, or like articles may be hand carried but not worn over the shoulder while in uniform, except when riding on a bicycle or motorcycle.

d. The wear of uniforms is prohibited:

(1) In connection with the furtherance of any political or commercial interests or when engaged in civilian employment or activities,

(2) When participating in public speeches, interviews, picket lines, marches, rallies, or public demonstrations, except as authorized by competent authority,

(3) When attending any meeting or event which is a function of, or sponsored by, an extremist organization,

(4) In establishments that primarily sell alcohol. If the establishment sells alcohol and food, soldiers may not wear uniforms if their activities in the establishment center on drinking alcohol only.

(5) When wearing the uniform would bring discredit to the soldier, the Georgia State Defense Force or the State of Georgia.

e. Headgear will be worn with all uniforms except under the following circumstances:

(1) When the wear of uniform headgear compromises safety. For example: the wear of industrial hard hats or a motorcycle helmet with the uniform is acceptable when required for safety.

(2) When riding in/on commercial vehicles or public conveyance.

(3) Headgear will not be worn indoors unless under arms in an official capacity or as directed by the commander (e.g., indoor ceremonial activities).

(4) When not worn, headgear will be carried in-hand or in a pocket, not attached to the uniform or hung from the belt.

(5) Soldiers are not required to wear headgear with any dress uniform to an evening (after retreat) social event.

d. The uniform may be worn off-duty, meaning without orders, by members in good standing for limited ceremonial occasions, and for travel to and from such occasions. Acceptable occasions are military funerals or memorial activities, military weddings (when either the bride, groom or both are in uniform), and award presentations or recognition activities of a military nature. Any off-duty wear of the uniform is subject to all the provisions of this regulation.

#### 1-3. Uniform appearance and fit.

a. Appearance. Each member of the GSDF will maintain a high standard of dress and appearance. Uniforms will be properly fitted (trousers pants or skirts should not fit tightly), clean, serviceable, and pressed as necessary. Personnel must project a military image that leaves no doubt that they live by a common standard and are responsible to military order and discipline.

(1) Personnel will ensure that when articles are carried in pockets; i.e., wallets, checkbooks, combs, and keys, these articles do not protrude from the pocket or present a bulky appearance. While in uniform, personnel will not place their hands in their pockets except momentarily to place or retrieve objects.

(2) Items such as keys and key chains will not be attached to the belt or belt loops unless required for a specific duty being performed, i.e., charge of quarters.

(3) Electronic devices such as cell phones and pagers may be worn on the belt but wear will be limited to a single device, its dimensions not to exceed 4x2x1 inches. Any device, case, or holder worn must be black; no other color is acceptable.

(4) Uniforms will be kept buttoned, zippered, and snapped as designed; metallic devices will be kept polished; ribbons will be clean and not frayed; and shoes will be clean and shined.

(5) Lapels and sleeves of coats and jackets may be roll pressed (without creasing). Skirts will not be creased.

(6) Trousers, slacks, and sleeves of shirts will be pressed. The AG415 or AG428 shirt may be military pressed with vertical creases centered on the front pockets and three equally spaced vertical creases from the yoke seam downward (or from a horizontal crease between the shoulders of female shirts) on the shirt back.

(7) Trouser legs of the class C uniform may be bloused above the boots using integral ties or elastic blousing bands. When bloused, trousers will not extend below the third eyelet from the top of the boot.

b. Tailoring. The following is a summary of general tailoring guidelines:

(1) Uniform coats and jackets. The sleeve length will be 1 inch below the bottom of the wrist bone.

(2) Trousers. Trousers will reach to the top of the instep in front and be cut on a diagonal line to reach the midpoint between the top of the heel and the top of the standard shoes in back. There will not more than one crease at the instep and that should be of minimal size.

(3) Knee-length skirts. Skirt length will be not more than 1 inch above nor 2 inches below mid-knee.

(4) Long sleeve shirts. Sleeves of the long sleeve shirt will be worn to the center of the wrist bone.

1-4. Personal appearance. A neat and well-groomed appearance by personnel is fundamental to the GSDF, and contributes to building the pride and esprit essential to an effective military force.

1-5. Responsibility for appearance.

a. It is the responsibility of commanders to assure that personnel under their command present a neat and military appearance.

b. It is the responsibility of each individual to maintain the highest standard of personal appearance while in uniform.

1-6. Appearance standards. All personnel will observe the following minimum standards whenever in uniform:

a. Hair. There are many hairstyles which are acceptable. So long as a soldier's hair is kept in a neat, clean manner, the acceptability of the style will be judged solely by the criteria described below. Extreme or fad style haircuts or hair styles are not authorized. If dyes, tints or bleaches are used, colors must be natural to human hair and not present an extreme appearance. Lines or designs will not be cut into the hair or scalp. Styles of hair and texture differ among the different ethnic groups and these differences affect the style worn by each soldier. Haircuts, without reference to style, will conform to the following standards.

(1) Male.

(a) The hair will be neatly trimmed on the top of the head. The length and bulk of the hair will not be excessive or present a ragged, unkempt or extreme appearance. Hair will present a tapered appearance and when combed will not fall over the ears or eyebrows or touch the collar, except for the closely cut hair at the back of the neck. The block cut fullness in the back is permitted, in moderation, as long as the tapered look is maintained. In all cases, the bulk or length of hair will not interfere with the wear of headgear or protective masks.

(b). Sideburns will be neatly trimmed. The base will not be flared and will be a clean-shaven, horizontal line. Sideburns will not extend below the lowest part of the exterior ear opening.

(c) The face will be clean-shaven, except mustaches are permitted. If a mustache is worn, it will be kept neatly trimmed, tapered and tidy and will not present a chopped-off appearance. No portion of the mustache will cover the upper lip or extend sideways beyond a vertical line drawn upward from the corner of the mouth (Figure 1). Handlebar mustaches, goatees, and beards are not authorized. If beard growth is prescribed by appropriate medical authority, the length required for medical treatment must also be specified. For example, "A neatly trimmed beard is authorized. The length will not exceed ¼ inch."



Wear of moustache – Figure 1

(d) The wear of a wig or hairpiece in uniform or on duty is prohibited except to cover natural baldness or physical disfigurement caused by accident or medical procedure. When worn, it will conform to the standard haircut criteria as stated.

(2) Female.

(a) Hair will be neatly groomed. The length and bulk will not be excessive or present a ragged, unkempt, or extreme appearance. Hair will not fall over the eyebrows or extend below the bottom edge of the collar. Hair styles will not interfere with the proper wearing of military headgear or protective masks.

(b) A hairnet will not be worn unless it is required for health or safety reasons.

(c) Wigs or hairpieces may be worn as long as the wig or hairpiece is of a natural color and the style and length conform to appearance standards.

(d) Hair holding devices (such as but not limited to barrettes, pins, clips, bands), if used, must be unadorned and must be transparent or similar in color to the hair and will be inconspicuously placed. Beads, bows, or similar ornamental items are not authorized.

b. Cosmetics. Female soldiers are authorized to wear cosmetics applied conservatively (as determined by the local commander) and in good taste. Exaggerated or faddish cosmetic styles are inappropriate with the uniform and will not be worn. Lipstick and nail polish may be worn with all uniforms as long as the color is conservative and complements the uniform. Extreme colors (examples but not limited to) such as purple, gold, blue, orange, green, khaki, camouflage, and white, will not be worn. Nails will not be decorated with multi-colors or designs.

c. Fingernails. All personnel will keep fingernails clean and neatly trimmed so as not to interfere with performance of duty, detract from the military image, or present a safety hazard.

d. Body Piercing. The attaching, affixing, or displaying objects, articles, jewelry or ornamentation to or through the skin while in uniform, or in civilian clothes while on duty, or on any military installation or other places under military control, is prohibited, with the exception of the provision for female soldiers to wear pierced earrings as described in paragraph 1-7c of this regulation.

e. Tattoos. Tattooing in areas of the body (i.e., face, neck or hands) that would cause the tattoo to be exposed while in class A uniform, detract from a soldierly appearance and are not permitted. Tattoos of which are considered to be sexist, racist, extremist or grossly offensive to decency, modesty or propriety, are not permitted on any part of the body.

f. Hygiene and body grooming. Soldiers are expected to maintain good daily hygiene and wear their uniforms so as not to detract from the overall military appearance.

g. Physical . Physical fitness is an important part of creating a professional and acceptable appearance. The standards described in GSDF Regulation 40-1, Physical Examinations and Standards of Physical Fitness, will be maintained.

1-7. Wearing of jewelry.

a. The wearing of a wrist watch, a wrist identification bracelet, including a conservative style MIA/POW identification bracelet (only one item per wrist), and not more than two rings (wedding set is considered one ring) is authorized with uniforms unless prohibited for safety of health reasons as long as the style is conservative and in good taste.

b. No jewelry, watch chains, or similar items, to include pens and pencils, will appear exposed on uniforms. Authorized exceptions are a conservative tie tack or tie clasp which may be worn with the black four-in-hand necktie and a pen or pencil which may appear exposed on the hospital duty or food service uniforms or in the appropriate sleeve pockets on the ACU. Pens or pencils exposed in the pockets on the ACU should be black in color.

c. Females soldiers are authorized the wear of screw-on, clip-on, or post-type earrings with service, dress and mess uniforms. Earrings will not be worn with class C uniforms including the hospital duty, food service, and physical fitness uniforms. Earrings will not exceed 6mm or ¼ inch in diameter. They will be of gold, silver, white pearl, or diamond; unadorned and spherical. When worn, earrings will fit snugly against the ear and will be worn as a

matched pair with only one earring per ear lobe. Male soldiers are not authorized to wear any type of earring when in uniform or when on duty.

d. Fad devices, vogue medallions, personal talismans, or amulets are not authorized for wear when in uniform or on duty.

#### 1-8. Wearing of eyeglasses

a. Conservative civilian prescription eye-glasses are authorized for wear.

b. Conservative prescription and nonpre-scription sunglasses are authorized for wear except when in formation and while indoors. Individuals who are required by medical authority to wear sunglasses for medical reasons may wear them except when safety considerations apply.

c. Eyeglasses or sunglasses that are fad-dish or have lenses and frames with initials or other adornments are not authorized for wear. Lenses that are so large as to detract from the appearance of the uniform will not be worn.

d. Conventional eyeglasses may not be worn with protective masks as they will compromise the effectiveness of the mask. It is suggested that persons who are incapable of normal activities without eyeglasses purchase protective mask corrective lens inserts for use with masks.

e. Contact lenses may be when prescribed. Lenses may be clear or tinted. Tinted lenses must represent the appearance of normal eye color. When tinted lenses are worn, both eyes must appear similar in color.

## Chapter 2

### Basic Uniforms

2-1. Uniforms. The following basic Army uniforms and their authorized accessories as described in AR 670-1 are authorized for wear:

a. Class A green service uniform

b. Class B green service uniform

c. Class C

(1) Army Combat Uniform (ACU),

(2) Extended Cold Weather Clothing System (ECWCS)

(3) Maternity uniform

(4) Food service uniform

(4) Medical service uniform

d. Army Dress Green Uniform

e. Army Dress Blue Uniform

f. Army Mess Dress Uniform

#### 2-2. Identification tags.

a. Identification tags (two identical) will be worn around the neck except when safety considerations apply), at a minimum, when wearing the Army Combat Uniform, when engaged in field training, and when traveling in aircraft.

b. Identification tags will contain, at a minimum, the individual's name and SSN. Listing of blood type is optional and the accuracy of the listing is the sole responsibility of the individual.

c. Persons who are allergic to certain medications or have other medical conditions are encouraged to wear a medical alert tag on the same chain as the identification tags.

2-3. Security identification badges. Security identification badges will be worn in restricted areas as prescribed by the responsible command.

## Chapter 3

### Army Green Uniform

3-1. General guidelines. The Army Green uniform, or class A uniform, as adopted by the GSDF is intended for wear during most on-duty, non-field or utility occasions, and for travel and off-duty social purposes. While both the class A and B uniforms are authorized for year-round wear, the appropriate uniform is worn based on weather conditions, duties, and the formality of the occasion. When a specific uniform is not prescribed for formations or other occasions when uniformity is required, soldiers may wear the class A or any of the variations of the class B uniform with the accessories authorized for these uniforms. Commanders will not require the wear of optional items such as windbreakers or sweaters. General fitting instructions are provided in Chapter 1 of this regulation. For males, these uniforms will be worn with the shirt tucked into the trousers so that the shirt edge is aligned with the front fly opening and

the outside edge of the buckle so as to form a straight "gig line." For females, these uniforms may be worn with the shirt tucked in or left out of the slacks or skirt. Figures 2 through 7 show the class A and B green service uniforms and authorized headgear.

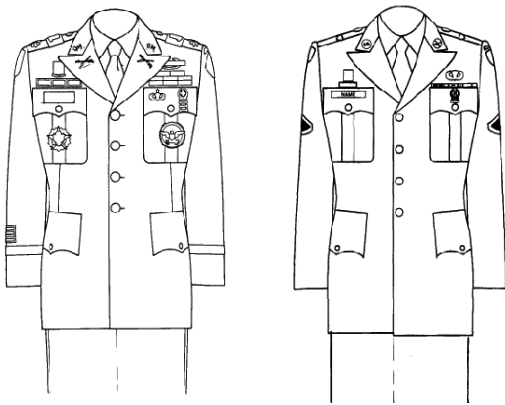
3-2. Composition.

a. Males.

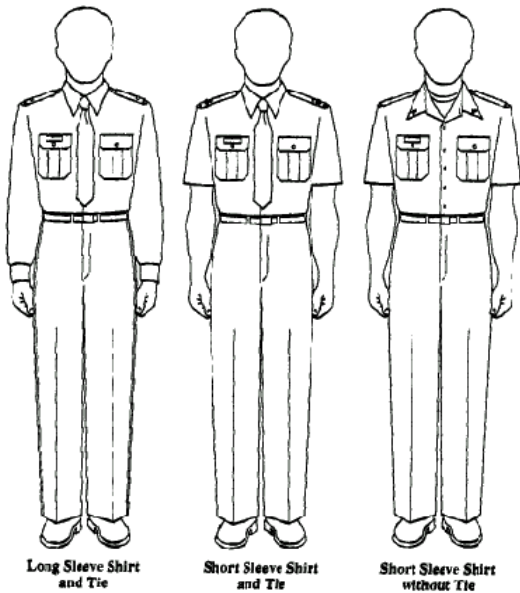
(1) The class A green service uniform for males is composed of the Army Green coat and trousers, an Army green shade 415 or 428 long or short sleeve shirt, and black four-in-hand tie. Insignia and accessories authorized for wear on the class A green service uniform can be found in paragraphs 3-5 and 3-6 of this regulation.

(2) The class B green service uniform is composed of the Army green trousers and Army green shade 415 or 428 short or long sleeve shirt ( A four-in-hand necktie must always be worn with the long sleeve shirt). Insignia and accessories authorized for wear on the class B green service uniform can be found in paragraphs 3-5 and 3-6.

(3) The Army dress green uniform is composed of the Army green coat and trousers, commercial long sleeve white shirt, and black four-in-hand tie (before retreat) or black bow tie (after retreat). The black beret will be worn with this uniform. Combat boots and organizational items such as brassards, etc., will not be worn with the Army dress green uniform. Specific branch designation shoulder cords (such as the Infantry blue shoulder cord) may be worn with the Class A service uniform by those who have properly earned them on active duty.



Class A service green - male  
Figure 2.



Class B service green - male  
Figure 3.

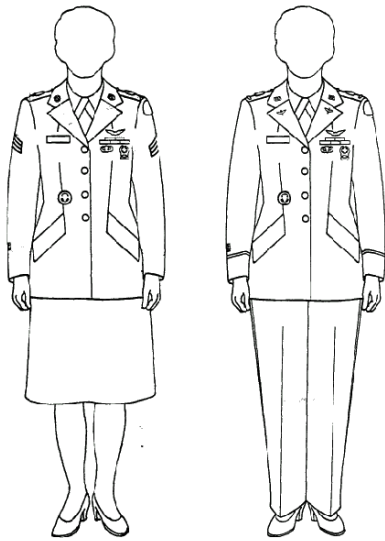
Other accessories and insignia items authorized for wear with the class A uniform may be worn with the Army dress green uniform.

b. Females.

(1) The class A green service uniform for females is composed of the Army Green coat and skirt or slacks, an Army green shade 415 or 428 long or short sleeve shirt, and black neck tab. Insignia and accessories authorized for wear on the class A green service uniform can be found in paragraphs 3-5 and 3-6 of this regulation.

(2) The class B green service uniform is composed of the Army green skirt or slacks and Army green shade 415 or 428 short or long sleeve shirt ( A black neck tab must always be worn with the long sleeve shirt). Insignia and accessories authorized for wear on the class B green service uniform can be found in paragraph 3-5 and 3-6.

(3) The Army dress green uniform is composed of the Army green coat and skirt, commercial white shirt, and black neck tab. Only the black beret is authorized for wear with this uniform. When the Army dress green uniform is worn for evening social occasions, headgear is not required. Combat boots, oxford shoes, berets, and organizational items such as brassards, MP accessories, etc., will not be worn with the Army green dress uniform. Other accessories and insignia items authorized for wear with the class A uniform may be worn with the Army dress green uniform.

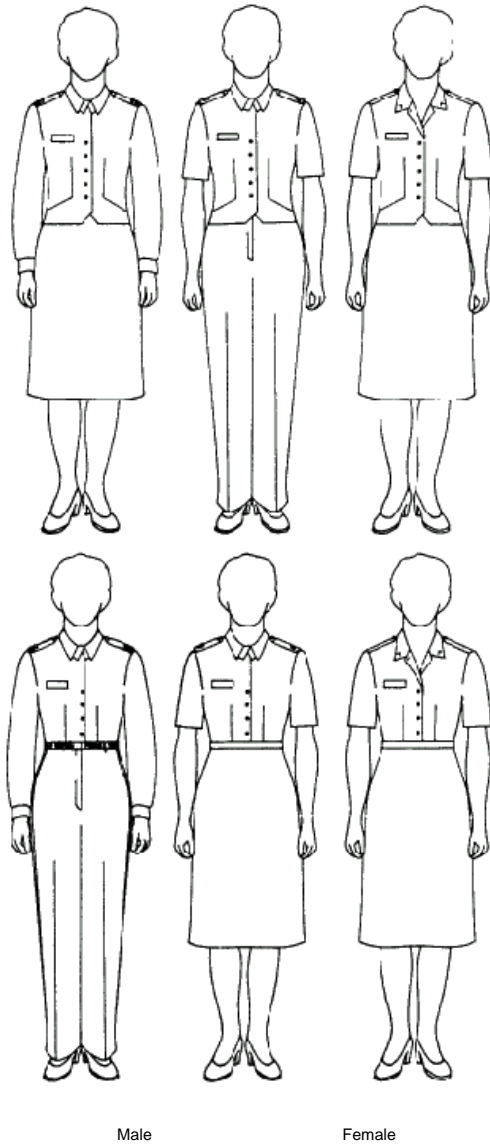


Class A green service uniform - female  
Figure 4.

3-3. Cuff and trouser braid - officers

a. Male. Warrant, company and field grade officers will wear a 3/4 inch wide black woven mohair braid around each cuff of the Army green coat, the bottom edge of which will be three inches above the end of the sleeve. General officers will wear a 1½ inch wide band of the same material in the same position. Warrant, company and field grade officers will wear a 1½ inch wide black woven mohair braid on the outside seam of each leg of the Army green trousers. The braid will pass in front of the pockets. General officers will wear two parallel ½ inch braids separated by ½ inch in the same position.

a. Female. Warrant, company and field grade officers will wear a ½ inch wide black woven mohair braid around each cuff of the Army green coat, the bottom edge of which will be three inches above the end of the sleeve. General officers will wear a 1½ inch wide braid of the same material in the same position. Warrant, company and field grade officers will wear a 1 inch wide black woven mohair braid on the outside seam of each leg of the Army green slacks. The braid will pass in front of the pockets. General officers will wear two parallel ½ inch braids separated by ½ inch in the same position.



Enlisted service and garrison caps  
Figure 7.

3-5. Items worn on the Army green uniform. Only the items listed below are authorized:

a. Army class A service green uniform and Army dress green uniform:

- (1) State insignias.
- (2) Insignia of grade.
- (3) Insignia of branch.
- (4) Shoulder sleeve insignia of the GSDF.
- (5) Shoulder sleeve insignia, former wartime unit.
- (6) Distinctive unit insignia.
- (7) Service stripes.
- (8) Overseas service bars.
- (9) Nameplate.
- (10) Decoration ribbons, full size.
- (11) Service medal ribbons, full size.
- (12) Unit awards.
- (13) Badges: identification; marksmanship; special skill; and combat badge.

- (14) Tabs.
- (15) Shoulder cords
- (16) Leadership identification tabs
- (17) Regimental crest.
- b. Army green class B uniform:
  - (1) Insignia of grade.
  - (2) Distinctive unit insignia.
  - (3) Nameplate.
  - (4) Decoration ribbons, full size.
  - (5) Service medal ribbons, full size.
  - (7) Unit awards.
  - (8) Badges: identification; marksmanship; special skill; and combat badge.
  - (9) Shoulder cords
  - (10) Regimental crest.

3-6. Accessories. The following accessories may be worn with the Army green uniform:

- a. Males.
  - (1) Belt, black web with solid brass buckle and tip.
  - (2) Beret
  - (3) Boots, combat, black leather (only when worn with bloused trousers when directed),
  - (4) Bow tie, black, (only with the Army dress green uniform)
  - (5) Chaplain's apparel.
  - (6) Coat, black all weather.
  - (7) Gloves, dress, black leather.
  - (8) Necktie, black four-in-hand.
  - (9) Scarf, black (only with black windbreaker or all weather coat).
  - (10) Shirt, white (only with Army dress green uniform).
  - (11) Shoes, black oxford and overshoes.
  - (12) Socks, black.
  - (13) Sweater, cardigan, black (only with class B green uniform).
  - (14) Sweater, pullover, black (only with class B green uniform).
  - (15) Undershirt, white, round neck (required with class B uniform when short sleeve shirt is worn without a necktie).
  - (19) Windbreaker (only with class B uniform).
- b. Females.
  - (1) Beret
  - (2) Boots, combat, black leather (only when worn with bloused trousers when directed),
  - (3) Chaplain's apparel.
  - (4) Coat, black all weather.
  - (5) Gloves, dress, black leather.
  - (8) Handbag.
    - (a) Black, clutch type (with class A and B uniforms only)
  - (6) Neck tab, black.
  - (7) Scarf, black (only with black windbreaker or all weather coat).
  - (8) Shirt, white (only with Army dress green uniform).
  - (9) Shoes, black oxford.
  - (10) Shoes, black pump.
  - (11) Socks, black (only with slacks)
  - (12) Socks, olive green or black with cushion sole (worn with combat boots only).
  - (13) Stockings, sheer.
  - (14) Sweater, cardigan, black (only with class B green uniform).
  - (15) Sweater, pullover, black (only with class B green uniform).
  - (16) Umbrella, black.
  - (17) Windbreaker (only with class B uniform).

## Chapter 4

### Army Combat Uniform.

#### 4-1. General guidelines.

- a. How worn.

(1) The ACU, or class C uniform, is the basic utility uniform and may only be worn when prescribed by the commander. It is generally not for travel, or for wearing off military installations except on duty or in transit between the individual's residence and duty station. The ACU is issued as a utility, field training or mission oriented uniform and is not intended to be worn as all-purpose uniform when other uniforms are more appropriate. The uniform is designed to be loose fitting; alterations to make it form fitting are not authorized. A tight fit reduces the airflow needed for ventilation and cooling.

(2) The coat will be worn outside the trousers and the trousers worn with a belt. The trousers will be worn bloused using the integral draw cords or blousing bands if trousers are not tucked into the boots. Trouser legs will not be wrapped around the legs so tightly as to present a "pegged" appearance.

(3) The uniform may be pressed. Commanders may require the uniform to be pressed for those special ceremonial occasions when appearance should be especially sharp such as parades, reviews, inspections, or other ceremonial occasions.

(4) The commander may authorize wear of the uniform without the coat in temporary conditions caused by heavy exercise, labor, or climatic conditions.

(5) The ACU patrol cap is the optional, command-directed headgear for this uniform. The ACU cap will be worn straight on the head so that the cap band creates a straight line around the head parallel to the ground. The cap will be worn so that no hair is visible on the forehead. The earflaps may be worn down at the discretion of the wearer during cold weather except in formation, when the commander may prescribe wear policy. The cap will not be blocked or rolled. Personnel authorized to wear organizational berets may wear such headgear in lieu of the ACU cap. Commissioned and warrant officers will wear sewn on subdued insignia of grade on the ACU cap and bright, pinned on insignia on the organizational beret. Chaplains will wear insignia of branch in the same manner. Enlisted personnel will wear subdued insignia of grade on the ACU cap. Subdued insignia will be worn on all headgear by all personnel in a field environment. (Note: Typically, the ACU cap will NOT be authorized for wear in-garrison by SDF personnel.)

(6) Soldiers may wear the black leather shell gloves with utility uniforms without cold weather outer garments provided the sleeves are rolled down and are over the tops of the gloves (this does not restrict the wear of gloves at any time when required for personal protection).

(7) The ACU cold weather coat may be worn with all utility uniforms. The black all weather coat may be worn as a raincoat with these uniforms but only in a garrison environment; the wear of camouflage raingear is preferred. The foliage green scarf, neck gaiter, and black leather shell gloves may be worn but are not required when the cold weather coat or other authorized cold weather outer garments are worn. Coats will be worn zipped and buttoned. The shirt collar will be worn inside outer garments. The hood of the ACU cold weather coat may be worn at the wearer's option. However, when the hood is not worn, it will be tucked into the jacket and zipper zipped.

(8) Female personnel may carry handbags with these uniforms only while in a garrison environment.

#### 4-2. Composition.

The primary class C uniforms are comprised as follows:

- a. Coat and trousers, Army Combat Uniform (ACUPAT, procured through commercial sources but meeting Army design); black beret and ACU patrol.
- b. Maternity uniform, ACUPAT
- c. Food service uniform, white.
- d. Medical service uniform, white.
- e. The jacket, cold weather (field jacket or GORTEX), ACUPAT, may be worn with any class C uniform.

NOTE: Further information regarding the maternity, food service, and medical service uniforms may be found in AR 670-1 dated 01 July 2002.

#### 4-3. Headgear.

- a. The ACU patrol cap, knit wool/fleece cap, and beret are authorized with the ACU uniform.

Class C camouflage uniform  
Figure 8.

#### 4-4. Items worn on the class C uniform.

- a. Badges (subdued, pin on only)
  - (1) Combat and special skill badges
  - (2) Special skill tabs (Special Forces, Ranger, Search and Rescue, CERT, etc, as properly authorized)
  - (3) Identification badges (subdued)
- b. Brassards
- c. Grade insignia
- d. Headgear insignia
- e. Leader Identification (cold weather jacket only)
- f. Shoulder sleeve insignia, GSDF, subdued

- g. Shoulder sleeve insignia, wartime unit, subdued
- h. Name and GEORGIA distinguishing tape
- i. Foreign badges (subdued)
- j. American Flag (reversed field) Full Color

4-5 Accessories. The following items may be worn with the class C uniforms:

- a. Belt, tan web with subdued or open-faced buckle.
- b. Beret, black
- c. Boots, combat
- d. Chaplains apparel.
- e. Coat, fleece, green.
- f. Gloves, black leather shell with or without inserts.
- g. Handbags (females only in garrison environment).
  - (1) Black, clutch type.
  - (2) Black, service.
- h. Headgear.
- i. Scarf, wool blend, OG (with field jacket only).
- j. Scarf, wool blend, black.
- k. Neckgaiter.
- l. Socks, OG or black cushion sole.
- m. Undergarments.
- n. Undershirt, gray.
- o. Personal hydration system, i.e., "camelback" (when authorized by local commander).
- p. Organizational equipment as determine by the commander.

## Chapter 5

### Cold Weather Uniforms

#### 5-1. General Guidelines.

a. The cold weather uniforms are available for wear at the wearer's option based on climatic conditions. The local commander may prescribe certain uniforms for wear for uniformity, however, that decision must be tempered by good judgment. Components of the uniforms may be intermixed with each other and with the ACU utility uniforms. The Gore-Tex® jacket or trousers may also be used as raingear in temperate weather with the ACU utility uniforms. To protect the water shedding capability of the uniforms, insignia will not be sewn or pinned to either cold weather uniform except as specifically noted in this chapter

#### 5-2. Composition.

The Extended Cold Weather Clothing System (ECWCS) is most effective in cold/dry, cold/damp, or cold/wet weather and is composed of the following items:

- (1) Camouflage Gore-Tex® parka.
- (2) Camouflage Gore-Tex® trousers.
- (3) Suitable layers of long underwear, wool blend shirt, sweater, etc.

#### 5-3. Headgear.

ECWCS. The foliage knit cap (stocking cap, the ACU patrol cap, the helmet and the beret are authorized with the cold weather uniform.

#### 5-4. Items worn on the cold weather uniforms.

##### ECWCS

- (1) Authorized Brassards
- (2) Grade insignia, subdued, slip-on loop (one only, worn on tab in center of chest)
- (3) Leader identification loop (one only, worn on tab in center of chest) If a leadership identification loop is worn on the tab, subdued insignia of grade will be used.
- (3) Headgear insignia
- (4) Name tape. The nametape is 3 ½ inches long, ½ inch wide, with ¼ inch block letters. It will be sewn on the left sleeve pocket flap, ¼ inch up from the bottom and centered left to right.

#### 5-5. Accessories. The following accessories may be worn with the cold weather uniforms.

- a. Boot, combat.

- b. Chaplains apparel.
- c. Gloves, black leather shell with inserts.
- d. Scarf, foliage, fleece
- e. Neckgaiter.
- f. Socks, olive green or black cushion sole.
- g. Undergarments.
- m. Organizational clothing and equipment as determined by the commander.

**Chapter 6**

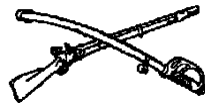
Insignia and Accouterments

6-1. General.

- a. This regulation specifies the items of insignia that may be worn on any of the GSDF uniforms which differ from AR 670-1.
- b. The insignia worn by GSDF personnel designates grade, organization, qualifications and prior military service.

6-2. State insignia.

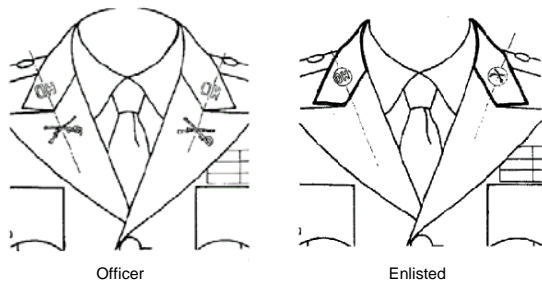
- a. "GA" for officers, block letters. Officers will wear the State insignia on both lapels of the class A uniform coat as in lieu of "U.S.", worn as prescribed in AR-670-1
- b. "GA" on disc for enlisted personnel. Enlisted personnel, except those in a CSM position, will wear the State insignia on the right lapel of the class A uniform coat, in lieu of "U.S.", worn as prescribed in AR-670-1. CSM personnel will wear the "GA" disc on both lapels of the Class A uniform coat.



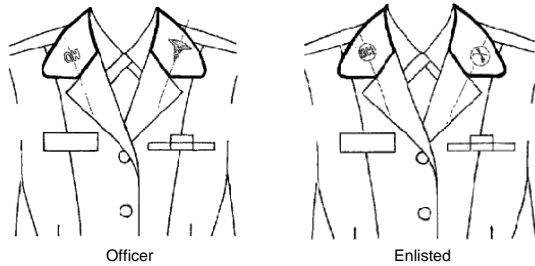
State Guard branch Insignia  
Figure 9.

6-3. Insignia of branch. Personnel will wear the state guard (SG) branch insignia when branch insignia are required to be worn.

- a. Persons who are assigned as doctors, dentists, nurses, or other professional medical personnel may wear the appropriate Army branch insignia in lieu of the SG insignia.
- b. Chaplains and staff judge advocates, upon certification of branch qualification by their respective departments, may wear the appropriate Army branch insignia in lieu of the SG insignia.
- d. Refer to paragraph 6-5 for guidance regarding Officer Candidates.
- e. Design.
  - (1) Officers will wear either the SG insignia or the appropriate insignia described above, based on their assignment.
  - (2) Enlisted persons will wear either the SG insignia or the appropriate Army insignia described above based on their assignment, mounted on a disc. (See para 6-2b, above, as it pertains to CSM personnel.)
- f. Manner of wear. The manner of wear will conform to AR-670-1.



Wear of state and branch insignia - male  
Figure 10.



Wear of state and branch insignia - female  
Figure 11.

6-4. Insignia of grade.

- a. Design. The design of all insignia of grade will conform to that prescribed for wear by the Army in AR 670-1.
- b. Manner of wear. The manner of wear will conform to AR-670-1. Refer to paragraph 6-5 for guidance regarding Officer Candidates.

6-5. Officer candidates.

- a. Persons who have been boarded and selected for commissioned or warrant officer rank pending completion of a basic officer or basic warrant officer course are officer candidates and as such will wear "Officer Candidate School" insignia ("O.C.S.") in lieu of insignia of rank and branch until completion of their required training.
- b. Design. The design of all insignia of grade will conform to that prescribed for wear by the Army in AR 670-1.
- b. Manner of wear. The manner of wear will conform to AR-670-1.



Officer candidate insignia  
Figure 12.

6-6. Shoulder sleeve insignia of the GSDF.

- a. Authorization. All members of the GSDF will wear the full color shoulder sleeve insignia (see figure 14) on the left sleeve of the class A jacket and the subdued shoulder sleeve insignia on the class C coat and the cold weather (field) jacket.
- b. How worn. The distinctive tab "Parati Sevire" will be worn centered 1/2 inch below the top of shoulder seam. The insignia will be worn, centered, touching the "Parati Sevire" tab.

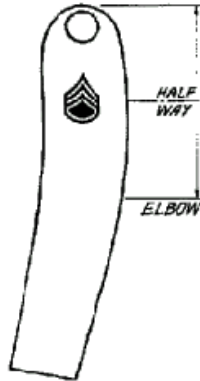


GSDF Tab and Shoulder Patch  
Figure 13.

#### 6-7. Shoulder sleeve insignia of former wartime service.

a. Only individuals who were assigned overseas as a member of a United States military organization during those periods cited in AR 670-1 are authorized wear of former wartime shoulder sleeve insignia. The shoulder sleeve insignia must have been authorized for wear at that time and must have been approved for general wear by superior authority. Locally authorized or "unofficial" insignia are not qualified.

b. How worn. Full color organization shoulder sleeve insignia which had been approved for wear by any former wartime unit may be worn at the individual's option on the right sleeve of the class A and the corresponding subdued insignia worn on the class C uniform. The insignia will be worn, centered, 1/2 inch below the top of the shoulder seam.



Location of shoulder sleeve insignia and sleeve insignia.  
Figure 14

#### 6-8. Leadership identification loop

a. The leadership identification loop will be worn by the following leaders in all organizations:

- (1) Commanders
- (2) Deputy Commanders/Executive Officers
- (3) Command Sergeants Major
- (4) First Sergeants

b. The leadership identification loop will be made of green felt or cloth, 1 5/8 inches wide, worn in the middle of both epaulets of the service green coat, the cold weather (field) jacket, (see figure 16) and on the rank tab of the ECWCS parka.

c. The leadership identification loop may only be worn while actively assigned to the authorized positions designated above and will not be worn after the individual is reassigned to a position not listed above.

#### 6-9. Distinctive unit insignia.

a. All members of the GSDF are authorized to wear the GASF Distinctive Unit Insignia (DUI) on the uniform.

b. Where worn. By all personnel of the GSDF as prescribed on the Class A or B uniforms and by enlisted personnel on the beret and garrison cap.

c. Wear of U. S. Army Distinctive Unit Insignia or Regimental Unit Crest is prohibited except that personnel in a retired status from the U.S. Army, Army Reserve or Army National Guard who were assigned a designated home regiment may wear that Regimental Unit Crest IAW AR 670-1.

d. How worn.

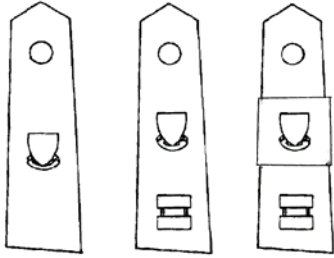
(1) The DUI will be worn on the class A uniform jacket shoulder loops, centered on the shoulder loops an equal distance from inside edge of the insignia of grade the outside edge of the button, with the base of the insignia toward the outside shoulder seam. When worn with Leadership Identification Loops, the DUI will be centered on the Leadership Identification Loop.

(2) The DUI will be worn by enlisted personnel centered on the left curtain of the garrison cap, 1 inch from the front crease and by those enlisted personnel authorized to wear organizational berets, centered on the organizational flash.

(3) The DUI will be worn centered above the nameplate when worn with the black pullover sweater.

(4) The DUI may be worn on the class B uniform shirt centered and 1/2 inch above the top seam of the right breast pocket or above other awards or devices worn above the pocket.

(5) The DUI may be worn on the Dress Blue uniform coat centered 1/2 inch above the top seam of the right breast pocket or above other awards or devices worn above the pocket.



Wear of DUI and leadership identification loop  
Figure 15.

#### 6-10. Distinguishing "GEORGIA" and nametapes

##### a. Distinguishing "GEORGIA"

(1) Description. Will be a strip of camouflage cloth 1 inch wide with the inscription "GEORGIA" in black block letters 3/4 inch high.

(2) How worn. The "GEORGIA" insignia will be centered, and worn immediately above and parallel to the top edge of the left breast pocket of the class C uniform and the field jacket. The tape will be 4 1/2 inches long, or may extend to the edges of the pocket. The ends of the tape will be folded under to prevent fraying.

##### b. Name tape.

##### (1) Description.

(a) Army Combat Uniform. The nametape will be a strip of camouflage cloth 1 inch wide with the individual's name in black block letters 3/4 inch high. Names with more than 10 letters will be in black block letters 1/2 inch in height.

(b) ECWCS parka. The nametape is 3 1/2 inches long, 1/2 inch wide, with 1/4 inch block letters.

##### (2) How worn.

(a) Army Combat Uniform. The nametape will be centered, and worn immediately above and parallel to the top edge of the right breast pocket of the class C uniform and the field jacket. The tape will be 4 1/2 inches long, or may extend to the edges of the pocket. The ends of the tape will be folded under to prevent fraying.

(b) ECWCS parka. The nametape will be sewn on the left sleeve pocket flap, 1/4 inch up from the bottom and centered left to right.

6-11. Service stripes. Service stripes as described on AR 670-1 are authorized for wear by enlisted persons. One stripe is authorized for each three years of Army and/or GSDF service.

6-12. Overseas service bars. Overseas service bars are authorized for all personnel for U.S. Army overseas service during the periods specified in AR 670-1.

#### 6-13. Brassards.

a. Purpose. Brassards are used to identify personnel who may be asked to perform a special task or to deal with the public. Brassards will be of cloth 17-20 inches long, 4 inches wide and of colors specified. They will be worn on the left sleeve of the outer garment with the bottom edge of the brassard approximately 2 inches above the elbow.

##### b. GSDF brassards authorized are as follows:

(1) Geneva Convention. This is a red Geneva cross on a white background. Worn subject to the direction of competent military authority, exclusively by medical personnel.

(2) Certain specialty brassards may be authorized for temporary wear by local commanders.

## Chapter 7

### Accessories.

#### 7-1. All weather coat.

a. Description. The coat is of polyester and cotton poplin, Army black shade 385 with a water and soil repellent finish. The all weather coat is double breasted with a belt and has a zip-out liner. The previous style all weather coat is also authorized until further notice. It is of similar material but is single breasted. See figure 17 for both coats.

b. How worn. The all weather coat may be worn with or without the liner. The coat will be buttoned, except for the neck closure, which may be worn opened open or closed. Male and female coats are buttoned and belted from opposite directions. The black scarf may be worn with the all weather coat. The black all weather coat is authorized for wear with service, dress, mess, hospital duty and food service uniforms and may be worn as a raincoat with

the utility uniforms when in a garrison environment. Only bright insignia of grade will be worn on this coat; officer rank on the epaulets and enlisted rank on the collar. This coat may be worn without insignia with civilian clothing.



All weather coat  
Figure 16

## 7-2. Belt, black web.

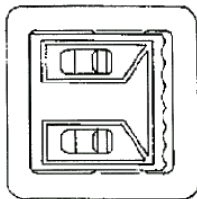
### a. Description.

(1) Male. The black cotton web belt is 1 ¼ inches wide and is trimmed to length by the wearer. There are two designs; one with a black metal tip and one with a brass tip. They are worn with the black, open-faced buckle and the solid brass buckle respectively.

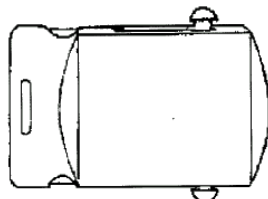
### (2) Female.

(a) Service. The black cotton web belt is 1 inch wide and is trimmed to length by the wearer. The belt has a brass tip and is worn with a solid brass buckle of the corresponding size.

(b) Utility. The black cotton web belt is 1 ¼ inches wide and is trimmed to length by the wearer. The belt has a black metal tip and is worn with the black, open-faced buckle.



Open-faced



Solid brass, male

Buckles  
Figure 17.

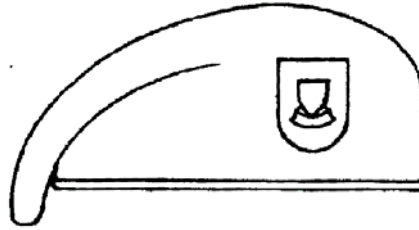
(2) How worn. The black web belt with the brass tip and buckle is worn with all Army service uniforms by male personnel and with the service green slacks with belt loops by females. The tan belt is worn with the ACU with a closed or open-faced buckle. The tan belt should be trimmed so that only 1 to 2 inches extend from the buckle. The brass tipped belt should be trimmed so that only the brass tip, and none of the fabric, extends from the buckle creating a sharp and finished appearance. Males will thread the belt tip from right to left; females from left to right.

## 7-3. Beret.

a. Description. The beret is black wool knitted outershell with a silesia interlining and a sweatband. A rayon adjusting ribbon is threaded through the binding. It is equipped with a stiffener on the left front.

b. How worn. The headband (edge binding) is worn straight across the forehead, 1 inch above the eyebrow with the top of the beret draped over the right ear and the stiffener positioned over the left eye. The ends of the adjusting ribbon will be cut off and the knot secured inside the edge binding and the back of the beret. A red organizational flash will be sewn to the front of the beret so that it is positioned above the left eye. Officers will wear bright insignia of rank centered on the flash; enlisted personnel will wear the DUI. Berets are authorized for wear with all service uniforms and ACU.

c. Berets awarded while serving in the U.S. Armed Forces or any other organization will not be worn with the GSDF uniform.



Beret, with flash and DUI  
Figure 18.

#### 7-4. Boots, combat.

a. Design. Of approved Army specification or pattern, all tan with leather or fabric uppers. Plain toe or capped toe may be worn.

b. Wear. The combat boot is for wear with the class C uniform.

c. Optional boots. As an option, boots of a similar commercial design are authorized for wear. Boots must be tan with a plain or capped toe. Boots made of patent leather or poromeric material are not authorized. Optional boots are authorized for wear in lieu of standard combat boots. Commanders may restrict wear in formation when uniformity is desired. Because of this, soldiers are encouraged to first acquire a pair of standard pattern boots before buying a pair of authorized optional pattern boots.

#### 7-6. Gloves.

a. Black leather shell with inserts.

(1) Description. Gloves are leather, five finger slip-on design with an adjustable strap and buckle on the back. The inserts are OG 483 wool/poly knit and are worn inside the black leather shell gloves.

(2) How worn. These gloves are authorized for wear with or without cold weather outer garments. Soldiers may wear the gloves with utility uniforms without cold weather outer garments provided sleeves are rolled down and are over the tops of the gloves. The black leather shell may be worn alone as a protective glove; the inserts will not be worn without the leather shell gloves. These gloves are not authorized for wear with service or dress uniforms.

b. Black dress, gloves unisex.

(1) Description. The black dress gloves will be of commercial design and may be made of leather, fine knit, silk, or other quality material.

(2) How worn. The black dress gloves may be worn with the class A service or Army green dress uniforms and when wearing the black all weather coat, windbreaker or capes.

c. White dress.

(1) Description. White dress gloves may be made of cotton, kidskin, doeskin, silk or other material of appropriate commercial design.

(2) How worn. They are for year-round wear with any dress or mess uniform. When prescribed by the commander, military police may wear white gloves on duty with service uniforms.

7-7. Handbag. Two styles of handbags are authorized for use by female soldiers; the service bag and the clutch type.



Service handbag  
Figure 20.

a. Service.

(1) Description. The handbag is made from the approved pattern or a similar commercial pattern of black leather or polyurethane with a shoulder strap attached. See figure 21.

(2) How worn. This handbag may be carried with the service, green dress, utility (in garrison only) and blue dress uniforms. It may be carried in the hand or worn on the shoulder.

## b. Clutch type.

(1) Description. The handbag is made of black leather or polyurethane, commercial design, with a zipper, snap or envelope type closure. Handbag may have a wrist strap but not a shoulder strap.

(2) How worn. This handbag may be carried with the service, green dress and utility (only in a garrison environment) uniforms. The leather version may be carried with the dress blue uniform during and after duty hours.

## c. Clutch type, dress.

(1) Description. The handbag is untrimmed, black leather or fabric, commercial design, envelope or clutch style, with or without chain.

(2) How worn. The leather handbag is authorized to be carried with the blue dress uniform during and after duty hours. The fabric handbag is authorized to be carried with the mess uniforms.. It may also be carried with the blue dress uniform after duty hours.

7-8. Helmet and helmet camouflage cover. Only the insignia prescribed below will be placed on the helmet or helmet camouflage cover. The color of the helmet will not be altered except for safety or training requirements.

a. Helmet camouflage cover. All personnel will wear subdued insignia of rank centered on the front of the camouflage helmet cover approximately 2 ½ inches up from the bottom rim. Insignia may be pin-on or sewn-on. Chaplains will wear their subdued insignia of branch in lieu of rank. Individuals may wear an elastic helmet band around the helmet which has the individual's last name is embroidered. The band will be worn so that the name band lies directly above the brim of the helmet and the name is centered below the insignia if rank.

## 7-9. Nameplate.

## a. Description. Nameplates will be in accordance with the following:

(1). Size. 1 x 3 x 1/16 inches (may be longer in the case of a lengthy name.)

(2). Color. Red (designated color XO3) with white lettering.

(3). Material. Laminated plastic.

(4). Lettering. The member's last name must be centered and 5/16 inch in height.

## b. How worn.

(1) Male personnel. The nameplate will be worn on the flap of the right breast pocket, centered between the top of the button and the top of the pocket on the Army green 415 or 428 shirts, the coats of the Army green, white and blue uniforms. See illustrations of individual uniforms. The nameplate will be worn centered on the black patch of the black pullover sweater except when wearing the DUI. When wearing a DUI, the nameplate will be worn ½ inch above the bottom of the black patch with the DUI centered left to right, top to bottom above the nameplate.

(2) Female personnel. On the Army green uniform, the nameplate will be worn between 1 to 2 inches above the top button, centered horizontally on the wearer's right side. The nameplate will be worn centered horizontally on the wearer's right side and slightly above the top edge of the top button on the Army blue, and white uniform coats. On the AG 415 or AG 428 shirts, maternity tunic, hospital duty and food service pantsuits, and hospital duty dress, the nameplate is worn in a comparable position. See illustrations of individual uniforms. The nameplate will be centered on the black patch of the black pullover sweater except when wearing the DUI. When wearing a DUI, the nameplate will be worn ½ inch above the bottom of the black patch with the DUI centered left to right, top to bottom above the nameplate. Females may adjust the position of the nameplate and DUI to conform to figure differences.

## 7-10. Neckwear.

## a. Male.

## (1) Description.

(a) Bow tie, black. The material is black silk or satin without stripe or figure, commercial design, square ends, not more than 2 ½ inches wide.

(b) Four-in-hand tie, black. The material is polyester wool, tropical, or similar woven fabric. The necktie will be two-fold, four-in-hand, with pointed ends. A pre-tied snap-on necktie is authorized as an option.

## (2) How worn.

(a) Bow tie. The black bow tie will be worn with the Army green dress, the blue and the white dress, and the blue and the white mess uniforms.

(b) Four-in-hand. The necktie will be worn with the class A uniform and the AG 415 or AG 428 long sleeve shirt when worn as part of the class B uniform. The necktie may be worn with the blue and the white dress uniforms when the dress code is "military informal." The tie is optional with the class B uniform when wearing the AG 415 or AG 428 short sleeve shirt. Use of a conservative tie tack or clap is authorized. The tie will be tied so it is shorter than 2 inches above the top of the belt buckle nor so long as to extend past the bottom of the buckle.

(c) When worn with the Army dress green uniform, the black four-in-hand tie is worn retreat and the black bow tie is worn after retreat.

## b. Female.

## (1) Description.

(a) Black service. The black service neck tab is made of polyester and cotton, precured durable press, plain weave poplin, Army black shade 305. The neck tab fastens (to a hook and loop fastener) underneath the collar of the womens' AG 415 or AG 428 shirt. The neck tabs are a tab configuration overlapping and attached to a narrow neck band with tabs forming angles.

(b) Black dress. The material is polyester and cotton broadcloth, Army black shade 305. It is a quarter-moon neck tab, which fits under the collar of the white formal blouse.

## (2) How worn.

(a) Black service. The neck tabs are worn with the AG 415 or AG 428 long and short sleeve shirts.

(b) Black dress. The black dress tab is worn with the formal white blouse with mess and evening mess dress.

## 7-11. Scarf.

## a. Black.

(1) Description. Of commercial design, 48 to 57 inches in length, made of black wool or polyester.

(2) How worn. Black scarves are authorized for wear whenever an outer garment is worn with any uniform except the Army combat uniforms (ACU). Scarves will be folded in half lengthwise, worn around the neck and crossed left over right at the throat. The ends will be tucked into the neckline of the outer garment.

## b. Foliage.

(1) Description. The material is fleece, foliage green, tubular seamless type with reinforced ends, 51 ½ to 55 ½ inches long by 8 ½ to 9 ½ inches wide.

(2) How worn. Foliage green scarves are authorized for wear whenever an outer garment is worn with any of the battledress uniforms. Scarves will be folded in half lengthwise, worn around the neck and crossed left over right at the throat. The ends will be tucked into the neckline of the outer garment.

## 7-12. Neckgaiter.

a. Description. The neckgaiter is a foliage green knitted cylindrical tube of approximately 10x15 inches, consisting of 90 percent polypropylene and 10 percent Lycra. The neckgaiter is camouflage compatible; one size fits all soldiers.

b. How worn. The neckgaiter is authorized for optional wear with all class C ACU uniforms and any cold weather uniform. It may be worn as a neck warmer, hood, balaclava, ear band, or hat in cold, windy, or dusty environments.

## 7-13. Shoes, oxford, black, male.

a. Description. The material may be leather, poromeric or patent. Shoes will be of basic, plain oxford tie design without toecaps or ornamentation. A similar design chukka boot of plain design without straps or zippers is also authorized. Sole edges of shoes or chukka boots will be of non-contrasting color. Other types of boots, such as Wellingtons, will not be worn.

b. How worn. The male black oxford shoes are authorized for wear with the service, dress, mess and hospital and food service duty uniforms.

## 7-14. Shoes, female. The following shoes are authorized for female soldiers.

## a. Oxford, black, female.

(1) Description. The material may be leather, poromeric or patent. Shoes will be of basic, plain oxford tie design with at least three eyelets, closed toe and heel, without toecaps or ornamentation and heels no higher than 2 inches. A jodhpur boot of plain commercial design without straps or zippers is also authorized for wear with slacks.. Sole edges of shoes or boots will be of non-contrasting color.

(2) How worn. This shoe may be worn with the service uniforms and the hospital and food service uniforms.

## b. Pumps, service, black or white, female.

(1) Description. The material is fine grain leather, poromeric or patent. Suede material or trim is not authorized. Pumps will be untrimmed of commercial design with closed toe and heel. Heel height may be from ½ inch to a maximum of 3 inches. Sole thickness will not exceed ½ inch.

## (2) How worn.

(a) Black service pumps are authorized for wear by female personnel with the service and dress uniforms and are required with the Army green uniform when worn as a dress uniform.

(b) White service pumps are authorized for wear by female personnel only with the white dress uniform.

## 7-15. Socks.

## a. Black, service.

(1) Description. They are cotton or cotton and nylon, plain black rib, elastic top, or stretch type, of commercial design.

(2) How worn. They will be worn by males with all service and dress uniforms. Females may wear them with slacks.

b. Olive green or black, cushion sole

(1) Description. They are cotton or cotton and nylon, plain rib, elastic top, cushioned sole, and reaching to mid calf or just below the knee, commonly know as "boot socks".

(2) How worn. They will be worn by all personnel with combat boots or optional authorized boots.

c. White, service.

(1) Description. They are cotton or cotton and nylon, plain white rib, elastic top, or stretch type, of commercial design.

(2) How worn. White socks may be worn by all male personnel with white oxford shoes. They may be worn by female personnel instead of white stockings when wearing hospital duty pantsuit with white oxford shoes.

d. Stockings, sheer.

(1) Description. They are sheer or semi-sheer, without seams, and of tones complimentary to the wearer and uniform. No patterned, pastel, or opaque stocking are permitted to be worn while in uniform.

(2) How worn. The stockings are worn with the service, dress, and mess uniforms. As an option, black cotton or cotton/nylon socks may be worn with the black oxford or jodhpur boots when wearing slacks.

e. Stockings, white.

(1) Description. They are sheer or semi sheer-sheer, without seams.

(2) How worn. They are worn with the hospital duty uniforms when wearing white oxford shoes. White socks may be worn instead of white stockings when wearing the hospital duty pantsuit.

#### 7-16. Sweaters.

a. Cardigan, black, unisex.

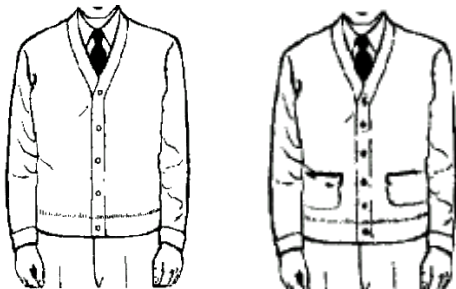
(1) Description. It is acrylic, Army black shade 435. The sweater is a long sleeved cardigan coat style with five buttons and without pockets.

(2) How worn. This sweater will only be worn in the individual's immediate work area. When the short sleeve shirt is worn without a tie, the collar will be worn outside the sweater. When worn with the black windbreaker, the sweater will not appear exposed below the windbreaker. When the sweater is worn, it will be buttoned and the sleeve will not be rolled or pushed above the wrist. The sweater may be worn with civilian clothes.

b. Cardigan, white, unisex.

(1) Description. The sweater is a knit commercial design white, long sleeved, six button, two pocket sweater.

(2) How worn. Medical and food service personnel may wear the white cardigan sweater while wearing their duty uniform, with the restriction that food service personnel may not wear the sweater when actually preparing food. Personnel will wear the collars of the white duty uniform outside the sweater. They will not wear rank, nameplate, or DUI on the sweater. Sleeves may be pushed up, rolled, or cuffed but may not be rolled or pushed above the wrist. The black pullover sweater and black cardigan sweater may no longer be worn with white duty uniforms. They will continue to be authorized for food service and medical personnel to wear with the class B uniform.



Black (left) and white (right) cardigan sweaters  
Figure 22.

b. Pullover, black, unisex.

(1) Description. Two sweaters are authorized; 100% wool and 100% acrylic. They are black, V-neck with shoulder, elbow and chest polyester and cotton fabric patches.

(2) How worn. The sweater is authorized for wear with the class B service uniform. The short sleeve shirt collar when worn without a tie or neck tab will be worn outside the sweater. The pullover sweater may also be worn under the all weather black coat and the black windbreaker. When worn under the windbreaker, it must not

appear exposed below the windbreaker. Officers and enlisted personnel in the rank of corporal or higher will wear shoulder marks indicating rank. The nameplate will be centered on the black patch of the black pullover sweater except when wearing the DUI. When wearing a DUI, the nameplate will be worn ½ inch above the bottom of the black patch with the DUI centered left to right, top to bottom above the nameplate. Chaplains will wear their insignia of branch in lieu of DUI. Females may adjust the position of the nameplate and DUI to conform to figure differences. The sleeves of the sweater will not be rolled or pushed above the wrists. The sweater may be worn without insignia with civilian clothes.

b. Pullover, olive drab, unisex.

(1) Description. The sweater is wool or wool/polyester with a stand-or-roll collar and five buttons at the neck.



Black pullover sweater, unisex  
Figure 23.

7-17. Umbrella.

a. Description. The umbrella will be of commercial design, black in color and without ornamentation or design.

b. How worn. Use of the umbrella is restricted to female personnel and only when wearing the service dress or dress uniforms. It will be carried in the left hand.

7-19. Undershirts. The following undershirts are authorized for wear.

a. White - may be round neck only. Must be worn by male personnel with Army Shade 416 Green short-sleeve shirt when no tie is worn.

b. Gray - round neck only. Must be worn by all personnel with the class C uniform.

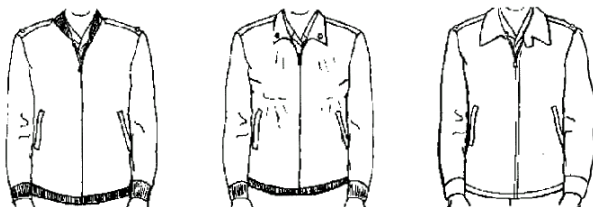
c. Olive green, black or undershirts imprinted with designs or words are not authorized.

7-19. Windbreaker.

a. Description.

(1) Old style. The old style black windbreaker is made of polyester and cotton poplin, Army black shade 385. The windbreaker is a hip length, single-breasted jacket with a zipper front closure, two inverted slant pockets and button-down shoulder loops. The jacket has a detachable single ply liner.

(2) New style. The new style is made of polyester and wool (65/35), Army black shade 458, and has a Velcro® attached liner. The officer windbreaker has a knit collar, cuffs and waist. The enlisted windbreaker has a standard collar, knit cuffs and waist. Female windbreakers have bust darts. The older style windbreaker is obsolete as of 01 Sep 03.



Officer

Enlisted

Old style

Windbreaker  
Figure 25.

b. How worn. The windbreaker is authorized for wear by all personnel with the class B service uniforms, hospital duty, and food service uniforms. The windbreaker will not be worn in formation unless authorized by the commander. The windbreaker will be worn zipped to at least the second button from the top of the shirt at all times. Only bright insignia of grade may be worn on the windbreaker. The windbreaker without insignia may be worn with civilian clothing.

## Chapter 8

Wearing of Decorations, Service Medals, Badges, and Unit Awards.

### Section I

General Information.

8-1. General. This chapter covers the decorations, medals, badges, unit awards and appurtenances, U.S. foreign, Georgia, and GSDF, which are authorized for wear on the GSDF uniform.

8-2. Authorization. Army Regulation 672-5-1 provides the authorization and qualifying criteria for the U.S. decorations, service medals, badges, unit awards and appurtenances worn on Army uniforms and should serve as a guideline for wearing of such in the GSDF. All of the above must be verified from a member's DD214. GSDF Regulation 672-1 provides the authorization and qualifying criteria for all GSDF awards and decorations authorized for wear on the uniform.

### Section II

Precedence of Awards, Decorations, and Medals.

8-3. Order of precedence by category of medals. The following list indicates the order of precedence by category, when medals from two or more categories are worn at the same time.

- a. U.S. Military decorations.
- b. U.S. Unit awards.
- c. U.S. Nonmilitary awards.
- d. Good Conduct Medal.
- e. U.S. Campaign and Service Medals.
- f. U.S. Training ribbons.
- g. U.S. Merchant Marine awards.
- h. State of Georgia awards.
- i. Georgia State Defense Force awards.
- k. Civil Air Patrol awards.
- l. U.S. Coast Guard Auxiliary awards
- m. Foreign awards

8-4. Order of precedence within categories of medals. Refer to AR 672-5-1 and GSDF 672-1.

### Section III

Manner of Wearing Decorations and Medals.

8-5. Manner of wear of full-size decorations and service medals.

- a. Where worn. Full size decorations and service medals may only be worn on the coat of the class A uniform when worn for social functions.
- b. How worn. All decorations, except the Medal of Honor, will be worn in the order of precedence from the wearer's right to left, in one or more rows, with a 1/8-inch space between rows. Second and subsequent rows will not contain more medals than the row below.

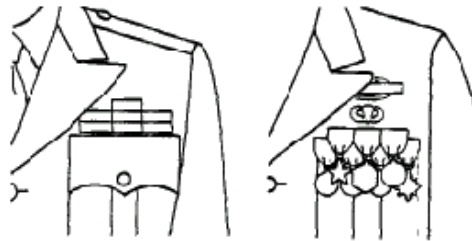
8-6. Manner of wear of Service Ribbons.

- a. Where worn. Ribbons representing decorations and service medals and service and training ribbons will be worn on the coat of the class A uniform and may optionally be worn on the class B uniform.

b. How worn. Ribbons will be in the order of precedence from the wearer's right to left in one or more rows with a 1/8-inch space between rows. No more than four ribbons will be worn in any one row. The determination of whether three or four ribbons will be worn in each row will be based on the size of the coat and the position of the lapel. The first and second rows will contain the same number of ribbons (three or four) before starting a third row. The third and succeeding rows will contain the same or fewer ribbons than the first two rows. The top row will be centered on the row beneath or aligned to the left, whichever presents the best appearance. Ribbons will be centered 1/8 inch above the left breast pocket in as many rows as necessary.

(1) Males personnel. Ribbons will be worn centered 1/8 inch above the left breast pocket in as many rows as necessary. See figure 31.

(2) Female personnel. Ribbons will be worn centered on the left side with the bottom row positioned parallel to the bottom edge of the nameplate on the coats of the Army green, blue, and white uniforms, maternity tunic and the AG 415 or AG 428 shirts. The placement of the ribbons may be adjusted to conform to individual figure differences. See figure 32.



Ribbons and medals - male  
Figure 26.



Ribbons and medals - female  
Figure 27.

c. 10<sup>th</sup> award. To display the 10<sup>th</sup> award, soldiers may wear a second ribbon, placing it to the wearer's left of the first ribbon. Soldiers may wear no more than four oak leaf clusters on each ribbon. If the receipt of future awards reduces the number of oak leaf clusters (that is, a silver oak leaf for five awards), soldiers will remove the second ribbon and place the appropriate number of devices on a single ribbon with any silver clusters being worn to the wearer's right of bronze clusters.

8-7. Manner of wear of miniature decorations and service medals. Miniature decorations and service medals may be worn on the left lapel of formal civilian attire when wear of GSDF uniforms would be inappropriate or not authorized. See Section V for wear of combat and special skill badges with miniature medals.

8-8. Manner of wear of unit award emblems.

a. Description. Unit award emblems with frames will be worn with the laurel leaves of the frame pointing upward. Only one emblem representing the same unit award will be worn. Emblems may be worn as prescribed when wearing full-size medals or service ribbons.

b. Where worn. U.S., foreign, State of Georgia, and GSDF unit award emblems will be worn on the class A uniform and may be worn on the class B uniform.

c. How worn. All unit award emblems with frames will be worn in the order of precedence from the wearer's right to left in rows of not more than three emblems per row and with up to 1/8 inch space between the rows. Emblems with frames will be worn centered and 1/8 inch above the right breast pocket.

d. Foreign unit awards. If a foreign unit award is worn, at least one other award must also be worn. Foreign unit awards are worn after U.S. unit awards by the date of receipt.

e. GSDF unit awards. If a GSDF unit award is worn, it will follow the U.S. and foreign unit awards.

## Section IV Authorized Badges and Tabs

8-9. Badges authorized for wear. A badge is awarded to an individual for identification purposes or for attaining a special skill or proficiency. Authorization for an individual to wear a federal badge will be shown on his DD214. GSDF Badges may be worn if authorized by HQ, GSDF and proper documentation is contained in the individual's 201 file. The following badges are authorized for wear on the class A uniform.

- a. Marksmanship badges and tabs.
- b. Combat and special skill badges and tabs.
- c. Identification badges.
- d. Foreign badges.

8-10. Tabs authorized for wear.

a. The only tabs authorized for wear in the GSDF are those awarded while a member was in Federal service, by the State of Georgia or the Georgia State Defense force. Approval for an individual to wear an authorized federal tab will be shown on his DD214 or reflected in the GSDF Personnel File.

b. Authorized tabs for GSDF in order of precedence are:

- (1) President's Hundred.
- (2) Special Forces.
- (3) Ranger
- (4) Search and Rescue
- (5) CERT

c. Wear. Tabs will be worn centered on the left sleeve 1/2 inch below the shoulder seam of the class A or C uniform (full color tab on the Class A, subdued on the Class C). GSDF patch and tab will be worn centered 1/8<sup>th</sup> inch below the skill identifier tab. Multiple tabs may be worn, stacked in order of precedence, as listed above. Note: The CERT tab has no full color iteration.

## Section V Wear of Badges

8-11. Manner of wear of marksmanship badges.

Marksmanship badges will be worn IAW AR 670-1.

8-12. Manner and wear of shoulder cords.

a. Shoulder cords awarded by the United States or awarded by a foreign government in the course of service to the United States or State of Georgia, will be worn in accordance with the provisions of AR 670-1.

b. Shoulder cords awarded in accordance with GSDF 672-1, Decorations, Awards and Honors, will be worn on the right shoulder of the Service Green Jacket, the AG Green Shirt 415 or 428 shirt when worn as an outer garment, attached to the button of the epaulet. Cords may also be worn on the dress blue uniform, attached to the shoulder board for officers and to the button of the epaulet of enlisted personnel.

c. Not more than two shoulder cords may be worn at one time, however, not more than one cord may be worn on the same shoulder at any one time.

8-13. Manner of wear of identification badges.

a. Up to two identification badges may be worn on one pocket or side of the coat or jacket of the uniforms prescribed below. When two identification badges are worn on the same side or pocket, the precedence of the badges will be from the wearer's right to left as listed above.

b. Identification badges will be worn as follows:

(1) Male personnel.

(a) Service and dress uniforms. ID badges will be worn centered on the coat and AG 415 or AG 428 right shirt breast pocket between the bottom of the flap and the bottom of the pocket. Badges will be equally spaced from left to right on the pocket.

(b) Mess and evening mess uniform. ID badges will be worn centered between the upper two buttons of the jacket.

(2) Female personnel.

(a) Service and dress uniforms. ID badges will be worn parallel to the waistline and centered on the right side of the coat of the Army green uniform and in a comparable position on the coat of the Army blue and white uniforms, and the maternity tunic and the AG 415 or AG 428 shirt. If no other awards and decorations are worn on the AG 415 or AG 428 shirt, the ID badges may be placed approximately 1 inch above the nameplate. Placement of badges may be adjusted to conform to individual figure differences.

(b) Mess and evening mess uniforms. ID badges will be worn centered between the lower two buttons on the right side of the jacket.

8-14. Manner of wear of foreign badges. No more than one foreign badge may be worn at one time. Only those badges awarded in recognition of military activities or by the military department of the host country are authorized for acceptance and permanent wear. The foreign badge will be worn 1/8 inch above the right pocket seam or 1/2 inch above any unit award. A foreign badge may not be worn unless at least one U.S., State of Georgia, or GSDF badge, medal, or service ribbon is worn at the same time.

## **Chapter 9**

### **Wear of the Uniform by Retired and Former Service Members**

9-1. General. This section addresses the wear of any Georgia State Defense Force uniform by retired members and former members of the Georgia State Defense Force Reference: AR 670-1, Section 29-3.

9-2. Wear by retired personnel. Retired personnel may wear the uniform and the highest rank achieved (including a rank which was effective upon retirement) for the following occasions:

- a. Attending military funerals, memorial services, weddings, inaugurations, and other occasions of ceremony.
- b. Attending parades on National or State holidays, or other parades or ceremonies of a patriotic nature in which any active or reserve component United States or State military unit is taking part.
- c. While on active duty following retirement or when performing duty in support of the GSDF or its efforts at the direction of the Commanding General.
- d. Wear of the uniform at any other time or for any other purpose than stated is prohibited.
- e. Retired personnel are authorized to wear shoulder sleeve insignia only as follows:
  - (1) The GSDF shoulder tab "Parati Servire" and GSDF shoulder sleeve insignia
  - (2) The shoulder sleeve insignia of either a federal or a state wartime unit may be worn on the right shoulder by retired personnel who served in the unit in the war zone. Wartime service includes all honorable service during a declared or undeclared war.
- f. General officers on active duty following retirement will wear the uniform and insignia prescribed for personnel in the active Georgia State Defense Force of corresponding grade and branch.

9-3. Wear by former members. Wear by former members of the Georgia State Defense Force who served honorably during a declared or undeclared war, or served on state active duty and whose most recent service was terminated under honorable conditions, may wear only the service dress Georgia State Defense Force uniform in the highest grade held during such service. The uniform may be worn only for the following ceremonies and when traveling to and from such ceremonies:

- a. Attending military funerals, memorial services, weddings, inaugurations, and other occasions of ceremony.
- b. Attending parades on National or State holidays, or other parades or ceremonies of a patriotic nature in which any active or reserve component United States or State military unit is taking part.
- c. Wear of the uniform at any other time or for any other purpose than stated is prohibited.
- d. The shoulder sleeve insignia of either a federal or a state wartime unit, or a state unit which was called to state active duty may be worn on the right shoulder by personnel who served in the unit, provided the shoulder sleeve insignia is different than that worn on the left shoulder. Wartime service includes all honorable service during a declared or undeclared war.

## TABLE OF PRESCRIBED DRESS

<u>Duty uniform</u>		Duty uniform as locally prescribed.
<u>Informal</u>		
Uniform		Army blue or white with four in hand tie or neck tab. Also the class A Army green uniforms (female with skirt) with white or black bow tie, four-in-hand necktie (before retreat) or neck tab as a substitute.
Civilian		Civilian business suit.
<u>Black Tie</u>		
Uniform		Army blue or white dress uniforms with black bow tie with blue, black or white mess uniforms. See notes. Army green uniform (female with skirt) with white shirt and black bow tie or tab.
Civilian		Civilian dinner jacket (tuxedo)
<u>White Tie</u>		
Uniform		Army blue or black evening mess uniforms.
Civilian		Evening full dress (tail coat).

NOTES:

1. Unless otherwise indicated by the host, the uniform equivalent of specified civilian attire may be worn. Invitations may prescribe dress as indicated above, e.g., "Army blue or blue mess". The dress white and white mess uniforms are normally worn from April to October.

